

# Regional Location Map



## Inland Empire: A Fast-Growing Economic Hub

The Inland Empire is California's fastest-growing region, projected to reach 5.6 million residents by 2048. San Bernardino County will make up 2.6 million, providing a strong consumer base and expanding workforce.

The region's economy is anchored by San Bernardino County's \$123 billion GDP (8th largest in the state) and Riverside County's \$115 billion GDP (10th highest in the state). It's also home to major research universities like UC Riverside, California State University, San Bernardino, Loma Linda University, California Baptist University, and the University of Redlands, plus more than a dozen community colleges supporting a skilled talent pipeline.



## Key Industry Clusters

- Advanced Manufacturing
- Food and Beverage Manufacturing
- Healthcare
- Technology

## Regional Investments

### First True High-Speed Passenger Rail System in the Nation

Brightline is the only private provider of modern, eco-friendly, intercity passenger rail service in America. Brightline West will connect Las Vegas and Southern California, and anticipates serving 4 million passengers at the start of service.

### Ontario International Airport

Southern California's Ontario International Airport (ONT) served over 7 million passengers and handled over 700,000 tons of freight in 2025, making it one of the fastest-growing airports in the nation. Continued growth and cargo expansion at ONT strengthens global connectivity and supports fast-moving logistics and business travel.

### San Bernardino County Transportation Authority

The San Bernardino County Transportation Authority (SBCTA) is responsible for cooperative regional planning and furthering an efficient multi-modal transportation system countywide. Several infrastructure improvements are underway including a zero-emission Bus Rapid Transit system, I-15 Corridor Freight and Express Lanes and I-10 Express Lanes.

## Advantages

### Prime Transportation Access

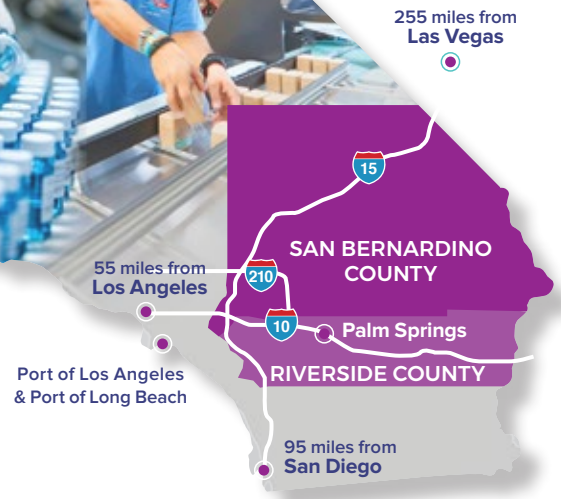
At the intersection of Interstate 10, Interstate 15, and California State Route 210, Rancho Cucamonga offers direct routes to Los Angeles, San Bernardino, Riverside, and San Diego Counties, moving goods and people with ease.

### Major Port Access

Access to the Ports of Los Angeles and Long Beach, two of the nation's busiest, via interconnected freeway and rail systems ensures streamlined import and export operations.

### Class 1 Rail Connections

Served by Union Pacific Railroad and BNSF Railway, provides reliable freight and cargo movement across North America.



## Access

to 20M+ consumers within a 2-hour drive



## 2M+

Combined workforce population for San Bernardino and Riverside Counties