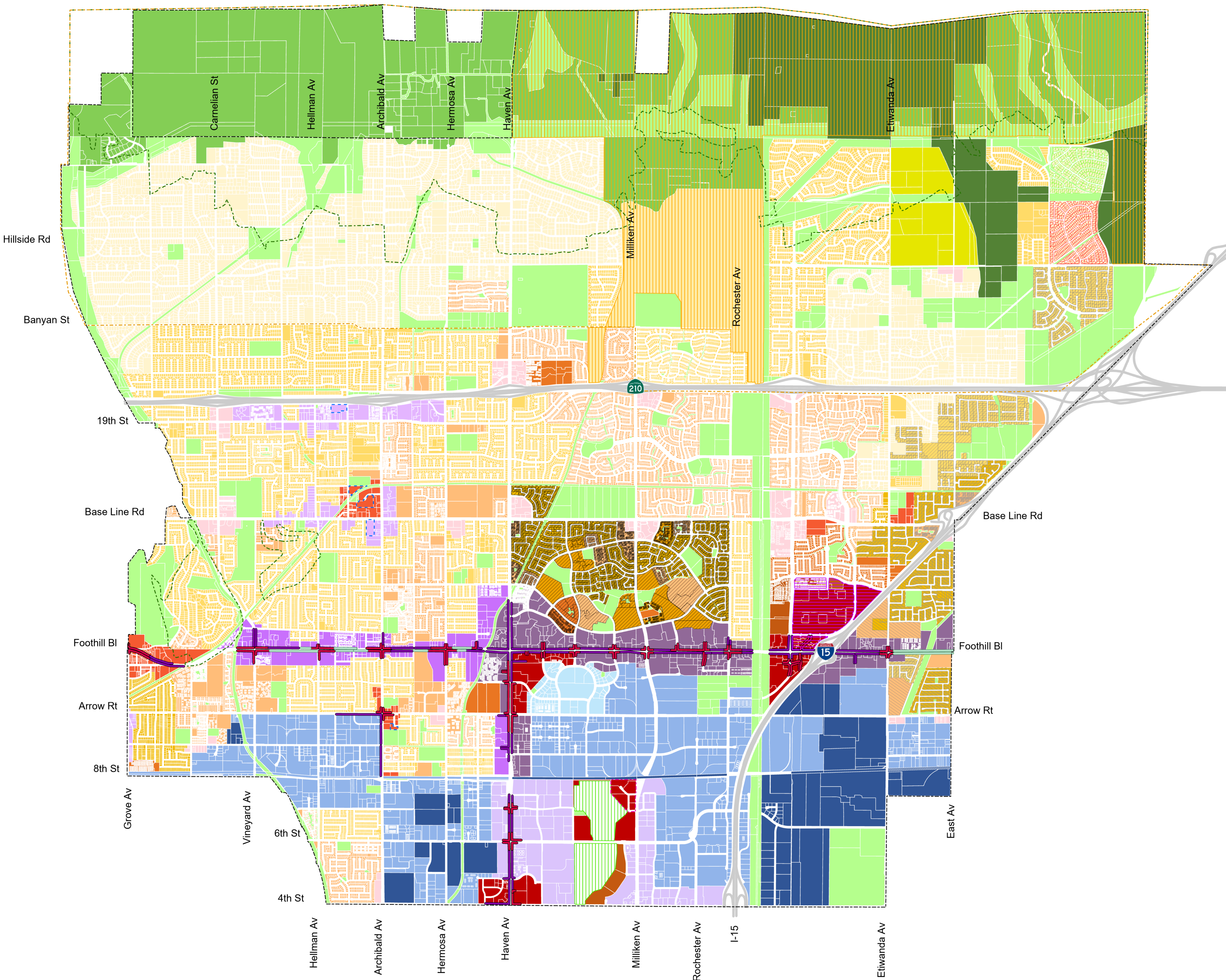
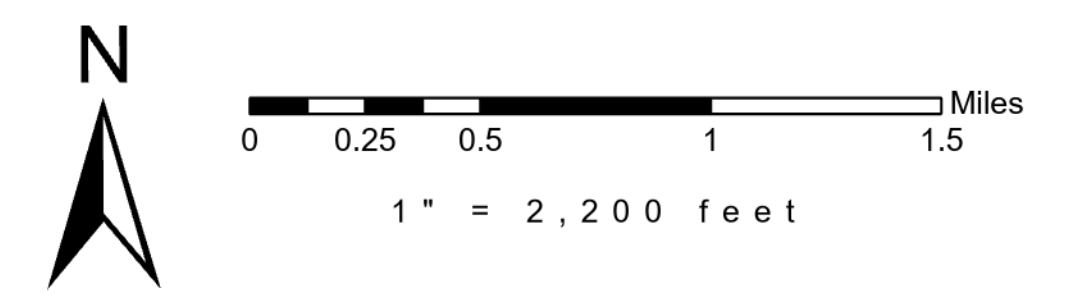


Zoning Map



- Zones**
- OS Open Space
 - HR Hillside Residential
 - OS Open Space, FC Flood Control, UC Utility Corridor
 - VL Very Low Residential
 - EHNCP
 - L Low Residential
 - LM Low Medium Residential
 - M Medium Residential
 - MH Medium High Residential
 - H High Residential
 - NI Neo Industrial
 - IE Industrial Employment
- Form Based Zones**
- NG3 Neighborhood General 3 Zone
 - CO1 Corridor 1 Zone
 - CO2 Corridor 2 Zone
 - NG3-L Neighborhood General 3 - Limited
 - CE1 Center 1 Zone
 - CE2 Center 2 Zone
 - Center 2 Limited
 - ME2 Mixed Employment 2 Zone
 - ME1 Mixed Employment 1 Zone
 - NE2 Neighborhood Estate 2
- Subzones**
- VL-EH 9000 Very Low Residential - Etiwanda Highlands 9000
 - VL-EH 14000 Very Low Residential - Etiwanda Highlands 14000
 - L-ESP Low Residential - Etiwanda Specific Plan
 - LM-ESP Low Medium Residential - Etiwanda Specific Plan
 - LM-ESP South Low Medium Residential - Etiwanda Specific Plan South
 - M-ESP Medium Residential - Etiwanda Specific Plan
 - M-ESP South Medium Residential - Etiwanda Specific Plan South
 - LM-TV Low Medium Residential - Terra Vista
 - M-TV1 Medium Residential - Terra Vista 1
 - M-TV2 Medium Residential - Terra Vista 2
 - MH-TV Medium High Residential - Terra Vista
 - H-TV High Residential - Terra Vista
- Overlays**
- Cucamonga Station Overlay
 - Equestrian Overlay
 - Hillside Overlay Per Ord. 628
 - Senior Housing Overlay
- Specific Plans**
- The Resort Specific Plan
 - Etiwanda Heights Neighborhood Conservation Plan
- Master Plans**
- Victoria Gardens Master Plan
- Corridor Frontages**
- Corridor Fronting Retail
 - Corridor Fronting Commercial
 - Corridor Fronting Residential
- Other**
- Freeway
 - City Limits



The geographic information available by and through City of Rancho Cucamonga is presented as a public resource of general information. The information may include both map data and data provided by applications. While the City of Rancho Cucamonga strives to maintain the accuracy of the content of its data files, it makes no claims, promises, or guarantees about the accuracy, completeness, or adequacy of the contents of the files. The City of Rancho Cucamonga assumes no responsibility arising from use of the information provided. No warranty of any kind, expressed or implied, including but not limited to, the implied warranties of merchantability and fitness for particular purposes is made. It is the responsibility of the recipient of this data to determine that the level of accuracy meets the needs of their application prior to making any judgments or decisions based on this information. Do not make any business decisions based on this data before validating your decision with the City of Rancho Cucamonga.