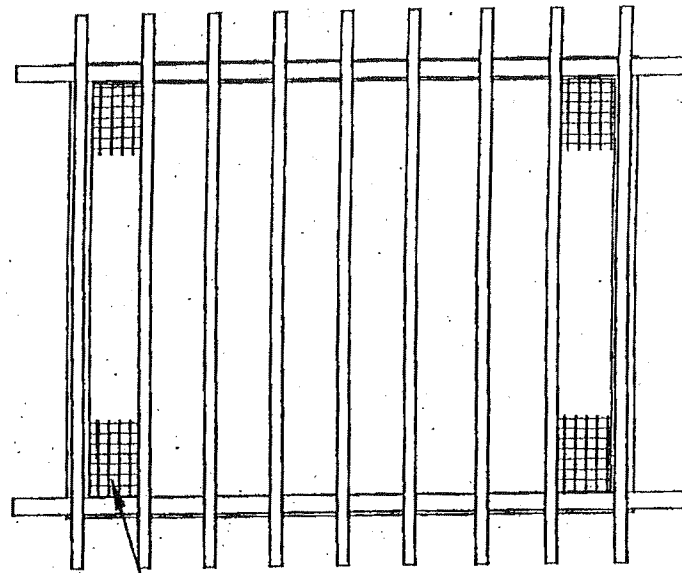


PLAN VIEW



ROOF PLAN

6" CONCRETE
SLAB TYPICAL
MEDIUM BROOM
FINISH.

WELD WIRE MESH
BELOW RAFTERS

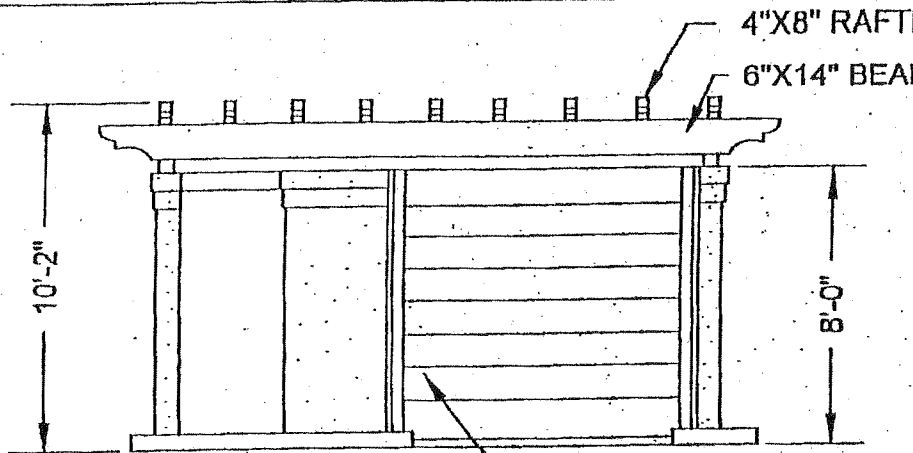
NOTES:

1. Trash enclosures shall be located in area accessible to trash vehicles. The number and location of trash enclosures shall be subject to City Planner review and approval, prior to issuance of building permits.
2. The architectural style shown here is conceptual and should be used as a design guide.
3. The trash enclosures for commercial and residential projects except single family shall have overhead structures and incorporating the following design features:
architecturally integrated into the design of the project; separate pedestrian access; large enough to accommodate two trash bins; sectional roll-up door; trash bins with counterweighted lids; and, overhead shade trellis with chain link or wire mesh underneath the trellis.

James Troper
PLANNING DIRECTOR

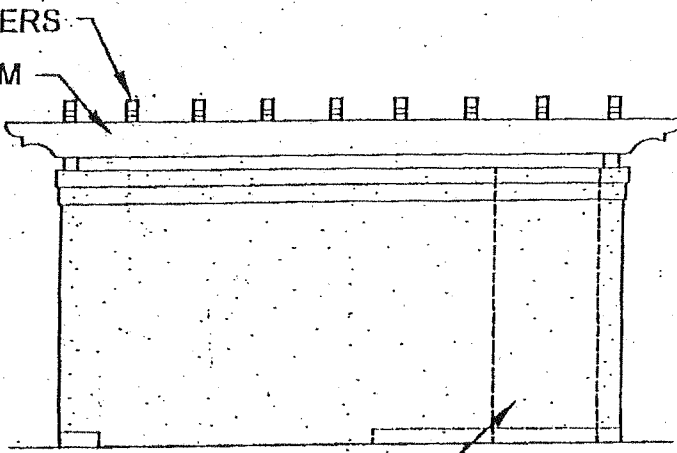
DATE: 8-5-08

COMMERCIAL
TRASH ENCLOSURE
WITH OVERHEAD STRUCTURES



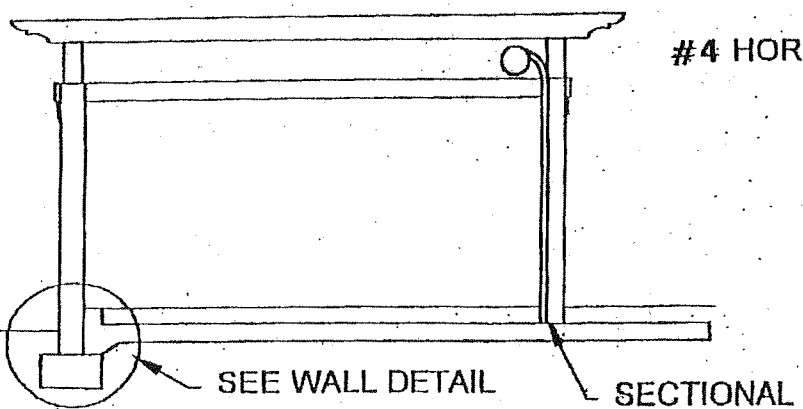
SECTIONAL ROLL-UP
DOOR SUBJECT TO
CITY PLANNER REVIEW
AND APPROVAL

FRONT ELEVATION



ALTERNATE
LOCATION
FOR MAN
DOOR

REAR ELEVATION

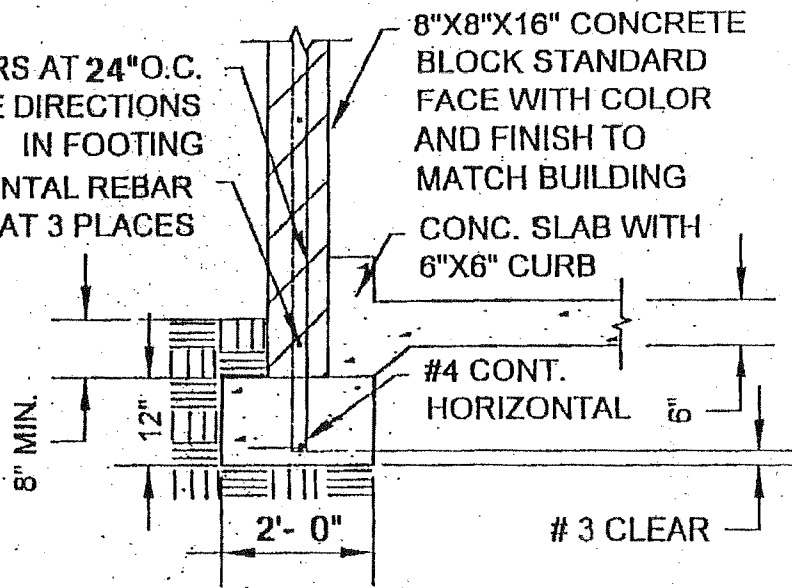


SEE WALL DETAIL

SECTIONAL
ROLL-UP
DOOR

SECTION

#4 VERTICAL BARS AT 24" O.C.
BEND IN ALTERNATE DIRECTIONS
IN FOOTING
#4 HORIZONTAL REBAR
AT 3 PLACES



8"X8"X16" CONCRETE
BLOCK STANDARD
FACE WITH COLOR
AND FINISH TO
MATCH BUILDING

CONC. SLAB WITH
6"X6" CURB

#4 CONT.
HORIZONTAL

3 CLEAR

WALL DETAIL

James Joseph
PLANNING DIRECTOR

DATE: 2-5-08

COMMERCIAL
TRASH ENCLOSURE
WITH OVERHEAD STRUCTURES