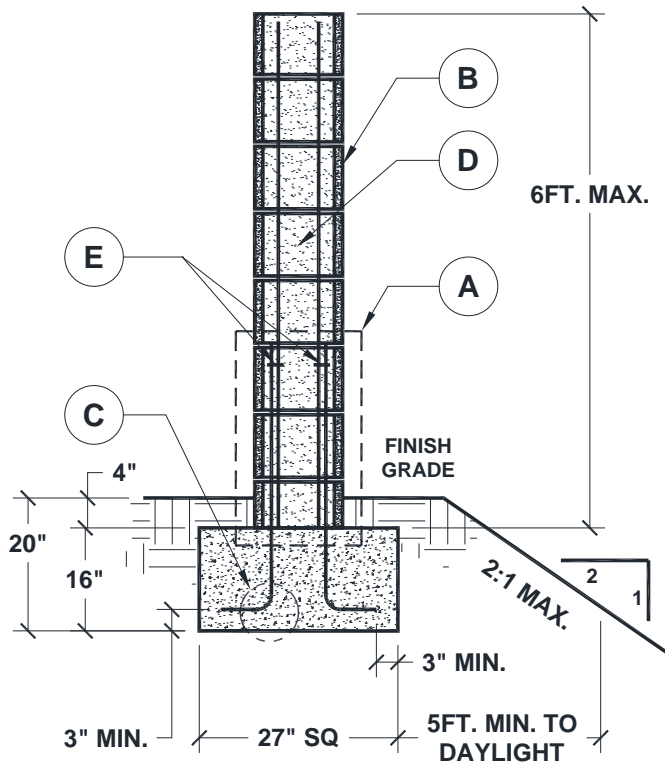


APPLY ONLINE AT [WWW.CITYOFRC.US/ACCELERATE](http://WWW.CITYOFRC.US/ACCELERATE)  
 SUBMIT ELECTRONIC PLANS ▪ TRACK STATUS ▪ REQUEST INSPECTION

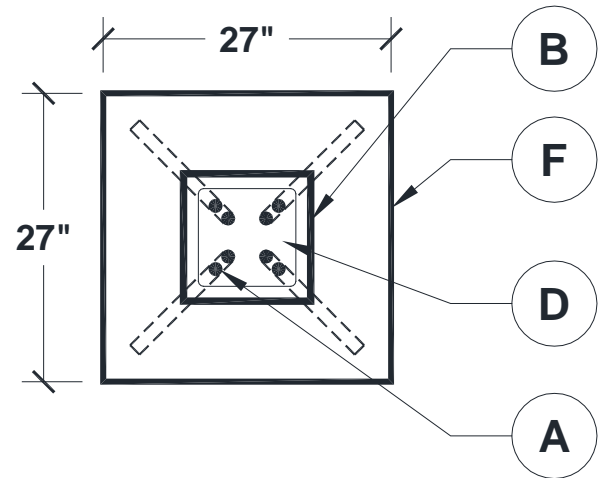
PILASTER STANDARD

PILASTER

NOT TO SCALE



SECTION VIEW



TOP VIEW

PILASTER LEGEND

- |  |  |
|--|--|
| <b>A.</b> #4 vertical bars. One on ea. corner. 24" min. overlap. | <b>D.</b> Solid grout.                           |
| <b>B.</b> 12" x 12" or 16" x 16" block.                          | <b>E.</b> #2 ties @ 16" O.C. One at each corner. |
| <b>C.</b> Footing rebar shall have a minimum 6" long hook.       | <b>F.</b> 27"L x 27"W x 16"D footing.            |



APPLY ONLINE AT [WWW.CITYOFRANCHO.CUCAMONGA.US/ACCELERATE](http://WWW.CITYOFRANCHO.CUCAMONGA.US/ACCELERATE)  
SUBMIT ELECTRONIC PLANS ▪ TRACK STATUS ▪ REQUEST INSPECTION

## NOTES

1. Pilasters and fence heights are regulated by the Planning Department. Consult with the Building Department before beginning construction.
2. Pilaster spacing shall not exceed 20 ft., when other infill fencing is attached.
3. Only open type fencing, such as wrought iron may be attached. Solid type fencing shall **NOT** be attached.
4. Gates and doors are limited to maximum of 200 lbs. and 4 ft. in width per pilaster. Installation of electrical circuits, conduits, or lighting fixtures require an electrical permit and inspections.
5. Footings are to be placed in undisturbed soil or properly compacted and engineered fill.

## MATERIAL SPECIFICATION

- **All Rebar:** ASTM A615 Grade 40 Min.
- **All Masonry Units:** ASTM C-90, Grade N
- **Mortar:** 1,800 PSI Min., ASTM C 270, Type M or S.
- **Grout:** 2,000 PSI Min.
- **Concrete:** 2,500 PSI Min. at 28 days, ASTM C 150

## DISCLAIMER

Alternate designs may be possible when provided with an engineered analysis. Use of this standard design is at the user's risk and carries no implied or inferred guarantee against failure or defects.

## DESIGN PARAMETERS

- **Active Soil Pressure:** 30 lbs. /sq.ft.
  - **Passive Soil Bearing:** 150 lbs./sq.ft.
  - **Coefficient of Friction:** 0.25
  - **Allowable Soil Bearing:** 1500 lbs./sq.ft.
  - **Wind Speed:** 110 mph (ULT.)
  - **Exposure:** C
- Seismic Design:** Category 'E', Site Class 'D'

## MANDATORY FIELD INSPECTION

1. **Footing:** Excavation trench shall be clean. Steel must in place supported 3" above and away from the surrounding soil.
2. **Rebar/Pre-Grout:** Bond beam rebar and vertical rebar must be in place and inspected prior to grouting.
3. **Final:** After grouting, but prior to any decorative cap placement.

Approved by:

  
Signature

Michael Frasure, CBO  
Building & Safety Manager